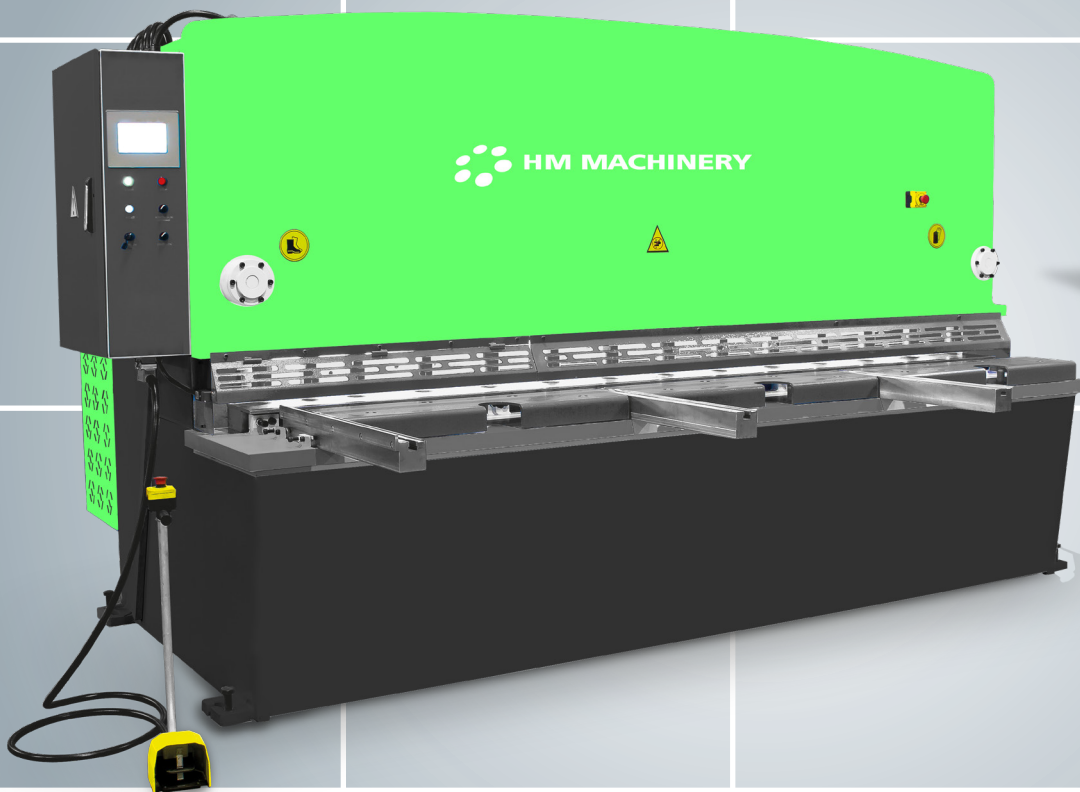


# Innovative cutting-edge high specification CNC Hydraulic Shears designed by HM MACHINERY



- Innovative design
- High quality & performance
- Monoblock welded steel construction
- High precision cutting
- CNC controlled motorised back gauge
- Automatic blade gap adjustment
- Rear light guarding safety system
- Cybelex Cybtouch 8 touch screen

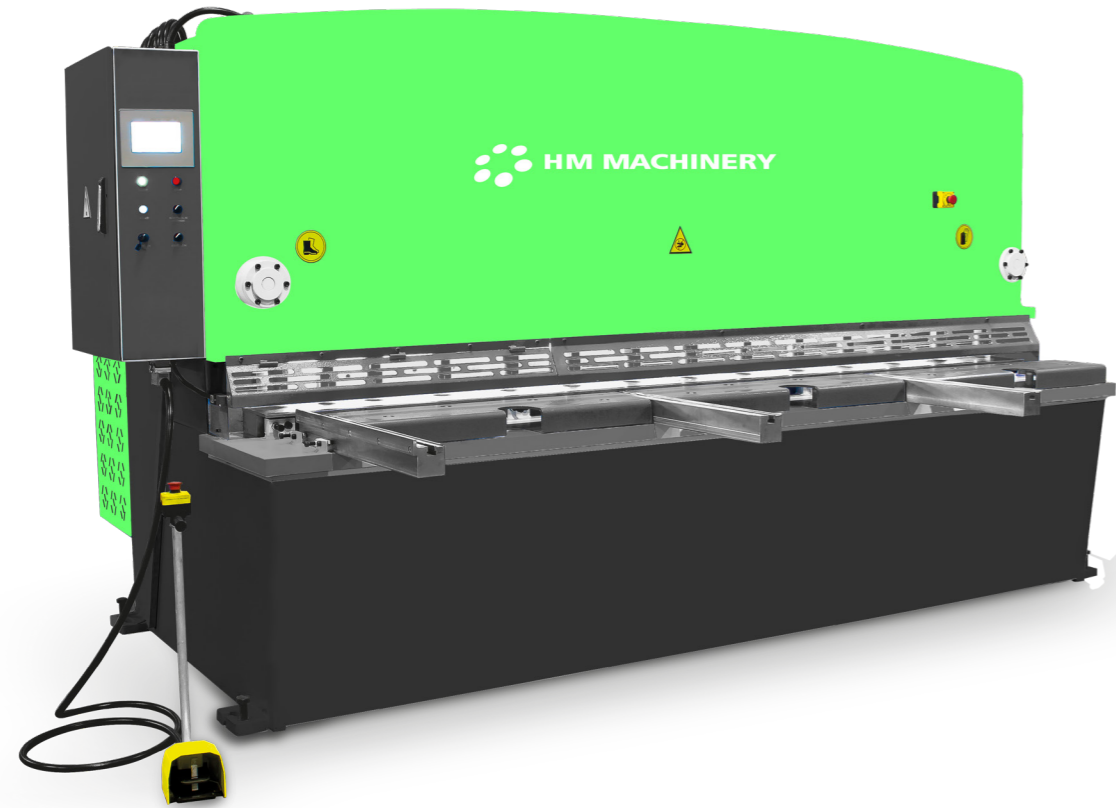
- member of the strong SCANTOOL GROUP



## HM HBX Hydraulic CNC Controlled Guillotine Shears :

HM MACHINERY proudly presents a new range of variable rake CNC controlled hydraulic guillotine shears. Strong in construction, and easy to use, with automatic blade gap, and rake adjustment, for different sheet thicknesses and material types. With fast back-gauge positioning through the CNC control, the highest levels of accurate cutting can be achieved.

The HBX Hydraulic CNC Shears have been developed with focus on design, quality, functionality and performance.



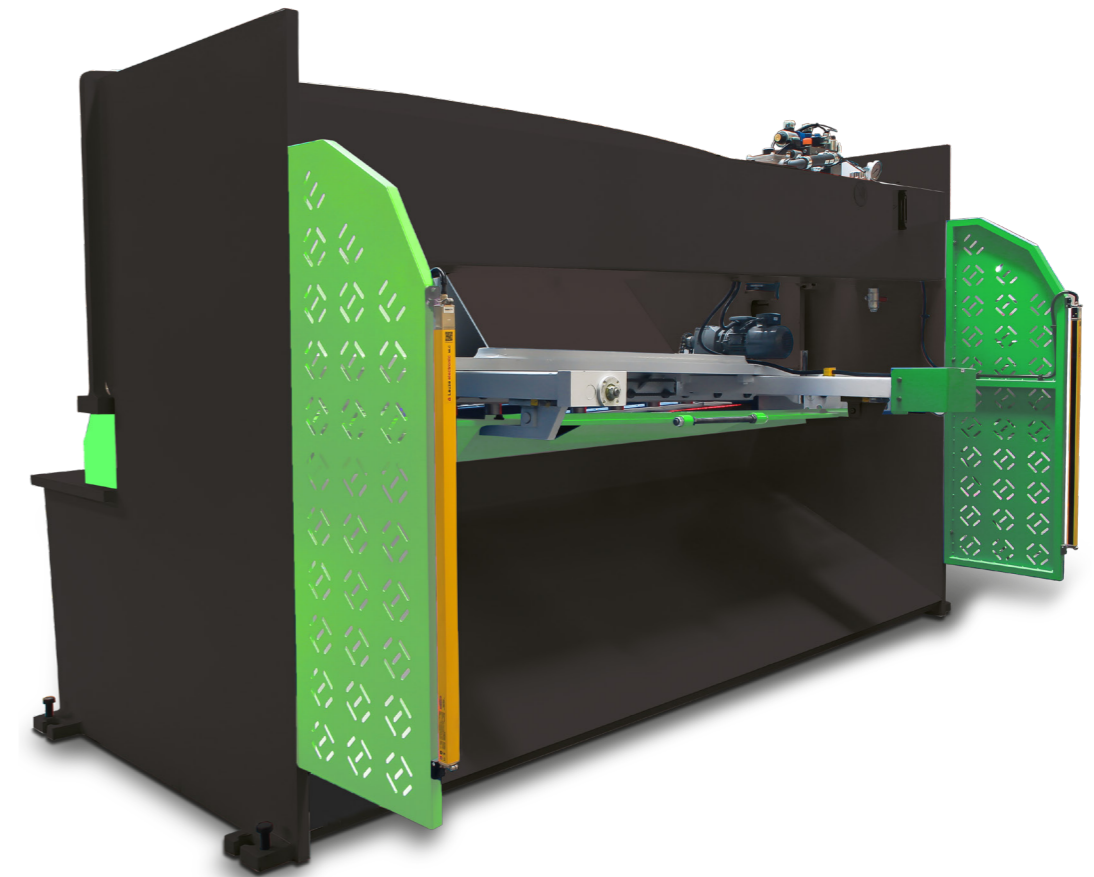
### Standard equipment:

- Cybelec Cybtouch 8 touch screen CNC controller
- CNC controlled blade gap and rake angle adjustment
- CNC controlled motorized back gauge of 750 mm
- High quality and hardened blades with 4 cutting edges from Böhler in Germany
- Electrical components from Siemens
- Bosch Rexroth hydraulic system
- Illumination of cutting line
- Table extensions of 1000mm each
- Front table with rollers
- 1 meter squaring arm with inch and metric ruler
- Optical rear safety system
- Emergency stops
- Back sliding sheets
- Collapsible finger protection cage
- Rear photocell protection
- Movable foot pedal with emergency stop
- Manufactured according to CE regulations

Quality: Manufactured in Europe using the highest grade materials and components.

Components: Electrical system incorporating Siemens components from Germany.  
High quality, hardened blades from Bohler in Germany.  
Bosch Rexroth hydraulic system from Germany  
Cybelec Cybtouch 8 CNC control from Switzerland

Functionality: A simple and logical touch screen display which reduces set up times.  
CNC control and adjustment of the back-gauge, blade gap and rake angle.



### Optional equipment:

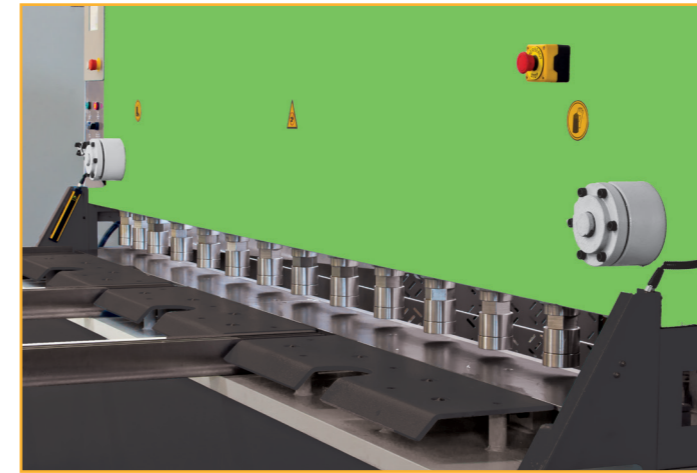
- Pneumatic sheet support system for thin materials
- Angular gauge
- Longer front support arms
- Laser cutting line
- Anti-twist system
- Light guard for finger protection at front
- Front sheet feeding system
- Conveyor
- Stacking system
- Blades for stainless cutting
- Oil cooler / heater
- X1, X2 adjustable angle back gauge system



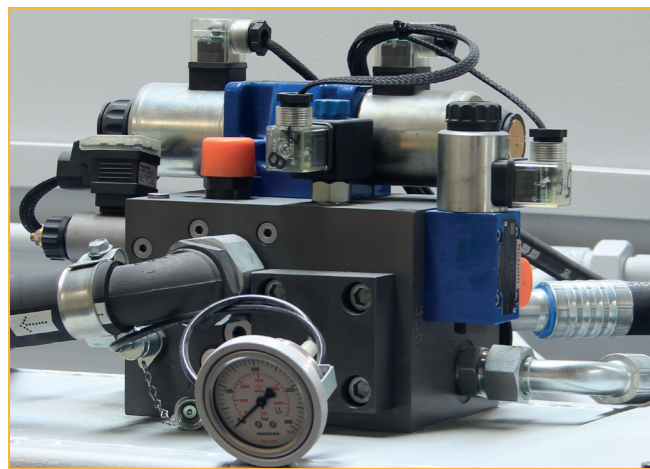
As with all CybTouch products, the design allows the operator to start using the control straight away.

Its very intuitive HMI display, showing only the necessary information, with a high level of automation, ensures that the CybTouch 8G is extremely easy to use.

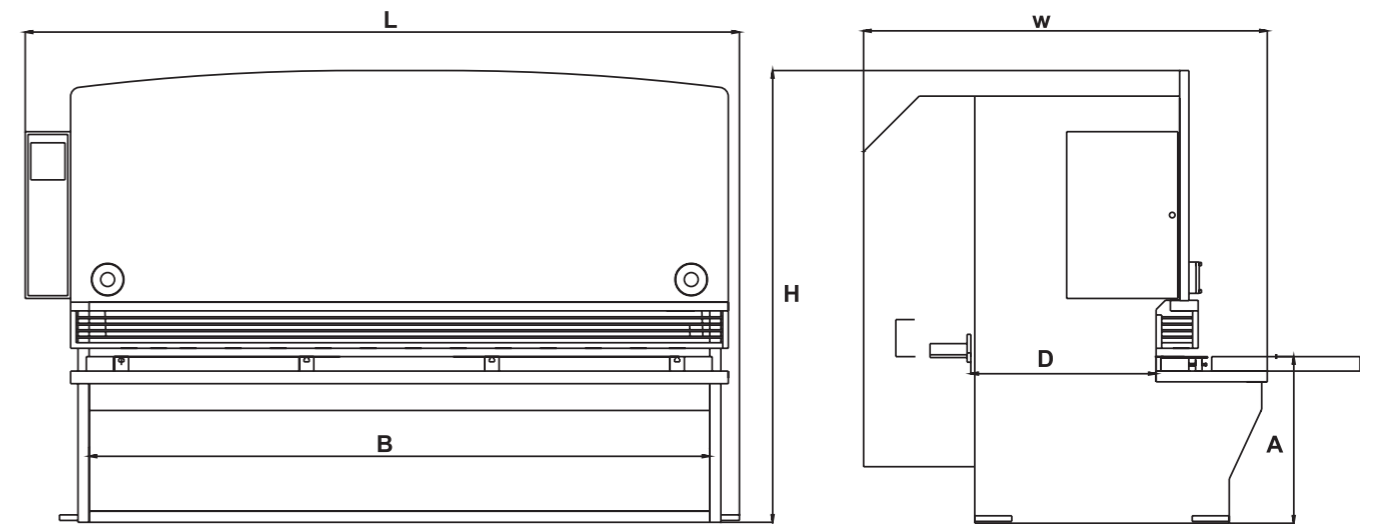
The CybTouch 8G is available as both an integrated panel, or if required, in a modern design enclosure specially designed to be attached to a swivelling arm.



Optional:  
Light guard for finger protection at the front



Bosch Rexroth Hydraulic System



Model	CUTTING LENGTH	CUTTING CAPACITY (42kg/mm <sup>2</sup> )	CUTTING CAPACITY (70kg/mm <sup>2</sup> )	CUTTING ANGLE	STROKE PER MINUTE	NUMBER OF HOLD DOWNS	MAIN MOTOR
	mm	mm	mm	Deg.	Stroke/min.	Numbers	Kw
HBX 2000-40	2050	4	2	0,7 - 2,4	23	9	11
HBX 2000-60	2050	6	3	0,7 - 2,4	23	9	11
HBX 2000-80	2050	8	4	0,7 - 2,4	20	9	15
HBX 2000-100	2050	10	5	0,7 - 2,4	13,0	9	15
HBX 2500-60	2550	6	3	0,7 - 2,9	17,0	12	11
HBX 2500-80	2550	8	4	0,7 - 2,4	14,5	12	15
HBX 2500-100	2550	10	5	0,7 - 3,2	11,0	12	15
HBX 2500-130	2550	13	6	0,7 - 3,2	7,5	12	18,5
HBX 3000-60	3050	6	3	0,7 - 2,4	17,0	14	11
HBX 3000-80	3050	8	4	0,7 - 2,0	14,5	14	15
HBX 3000-100	3050	10	5	0,7 - 2,7	11,0	14	15
HBX 3000-130	3050	13	6	0,7 - 2,7	7,5	14	18,5
HBX 4000-60	4050	6	3	0,7 - 2,4	13,5	18	11
HBX 4000-80	4050	8	4	0,7 - 2,0	12,0	18	15
HBX 4000-100	4050	10	5	0,7 - 2,7	10,8	18	15

BACK GAUGE STROKE	OIL CAPACITY	BLADE GAP ADJUSTMENT	BACK GAUGE SPEED	NUMBER OF SHEET SUPPORT ARM	TABLE HEIGHT	DISTANCE BETWEEN COLUMNS	LENGTH	WIDTH	HEIGHT	WEIGHT
mm	Liter	mm	mm/sec.	pcs.	mm	mm	mm	mm	mm	Kg.
600	150	0,05 - 0,6	110	2	850	2250	2685	2350	1680	3200
600	150	0,05 - 0,6	110	2	850	2250	2685	2350	1680	4000
600	200	0,05 - 0,6	110	2	850	2250	2685	2350	1680	4800
600	200	0,05 - 0,8	110	2	900	2250	2685	2350	2000	6000
600	150	0,05 - 0,6	110	2	900	2750	3200	2350	1800	5500
1000	200	0,05 - 0,6	110	2	900	2750	3200	2350	1800	6400
750	200	0,05 - 0,8	110	2	900	2750	3200	2600	2000	6800
750	250	0,05 - 0,8	110	2	900	2800	3250	2660	2100	7500
600	150	0,05 - 0,6	110	2	900	3250	3700	2350	1800	6000
600	200	0,05 - 0,6	110	2	900	3250	3700	2350	1800	7000
750	200	0,05 - 0,8	110	2	900	3250	3750	2600	2000	7200
750	250	0,05 - 0,8	110	2	900	3300	3750	2660	2100	8750
600	150	0,05 - 0,6	110	3	950	4300	4800	2550	2000	8500
1000	200	0,05 - 0,6	110	3	950	4250	4800	2550	2000	8800
750	200	0,05 - 0,8	110	3	900	4250	4700	2700	2200	12000







HM MACHINERY A/S is an independent company, part of the Scantool Group which consists of 5 well consolidated companies and 4 strong brands: HM MACHINERY, KEF-MOTOR, ARBOGA and SCANTOOL.

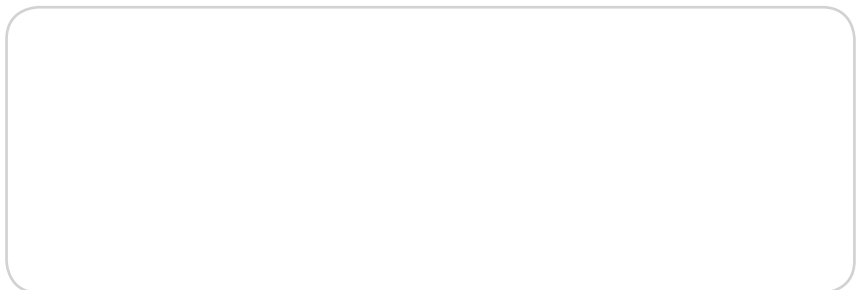
For further information about the wide HM product program please see our online catalogue on [www.scantool-group.com](http://www.scantool-group.com) or scan the QR code.



See our complete catalogue on  
[www.scantool-group.com](http://www.scantool-group.com),  
just scan this QR code



Sale & distribution:



HM MACHINERY A/S  
Industrivej 3-9  
DK-9460 Brovst, Denmark  
Tel: +45 96 17 93 00  
Fax: +45 96 17 93 03  
[info@hmmachinery.dk](mailto:info@hmmachinery.dk)  
[www.scantool-group.com](http://www.scantool-group.com)